

# Strategic Plan 2025-2030

**agdots**

nintirri  
centre 

# Nintirri Centre – Who we are

**Nintirri is a for purpose community organisation providing wrap around services to the families and people of Tom Price and its surrounding remote communities. Nintirri is at the heart of the community, and it creates and manages diverse service areas and activities that build and nurture.**

Nintirri's programs serve and respond to the diverse needs of the people that call the Pilbara home. Nintirri works in the 'in-between' spaces and focuses on providing services and activities that empower and improve the quality of life of people choosing to live in Tom Price. It also fills significant gaps in some essential services areas where, due to remoteness and or market failure, provision is not sufficient or otherwise available.

The word Nintirri translates to mean "holding a child on the hip" or "nurturing" in the language of the Eastern Guruma People, the traditional owners of the land where the Nintirri Centre is located. Nintirri started life in August 1983 as a multipurpose centre to benefit the community.

Nintirri incorporated in 1986 and has since grown to become a core community organisation providing essential social and economic services for Tom Price and outlying communities Paraburdoo, Wakuthuni, Bellary Springs, Youngaleena, Karijini National Park.



**Nintirri employs over 50 staff and partners with diverse organisations such as:**

- Shire of Ashburton
- Ashburton Aboriginal Corporation
- Yinghawangka Aboriginal Corporation
- Banjima Native Title Aboriginal Corporation
- Gumala Aboriginal Corporation
- Wakuthuni Aboriginal Corporation
- Tom Price Medical Centre
- Garduwarra Mia
- Tom Price Schools
- Tom Price Baptist Church
- Tom Price Frontier Services
- Pilbara Aboriginal Health Alliance
- Wonderful community groups and sports clubs
- ABC Foundation
- Earbus Foundation
- Lions Outback Vision

**And is a grateful recipient of funding from:**

- Rio Tinto
- Department of Communities
- DPIRD
- Department of Health
- IBN Aboriginal Corporation
- Panaceum
- Mawarnkarra Health Services (Integrated Team Care)
- EPIC (Empowering People in Community)
- Yinghawangka Charitable Trust
- Mission Australia
- MRL

**Vision** Enriched lives, thriving communities

**Purpose** Nintirri enables people to live safe, healthy and empowered lives through connecting and delivering vital community services in the Pilbara.

## Values



### Respect

We embrace different perspectives and cultures. We value our collective passion, knowledge, first nations wisdom and experience.



### Belonging

We create community and build people up. We create safe spaces for belonging, contribution and activities for all family members to flourish.



### Honesty

We strive for integrity and to walk our talk. We are transparent and communicate openly and respectfully. We hold ourselves to account for creating positive outcomes.



### Connection

We connect purpose with place and the right people. We bring together partners and community need to create impact and vital community services.

# What we do

Nintirri is responsible for five service areas that are shown in the diagram.

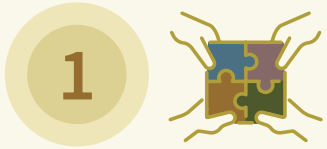
Nintirri is deeply valued for not just the key services, but also the way in which we deliver outreach services into our surrounding communities, working in culturally appropriate ways. As a result, Nintirri is trusted by the community because we value the social and relational capital of the communities in which we work.

Nintirri works as a connector, building the level of service collaboration between other providers. We work as a boundary spanner, connecting across organisations, Government Agencies, silos and issues, translating and creating knowledge transfer, which in turn enables innovation and increases the level of collaboration. Nintirri works to create value in the “in-between” spaces and ensures holistic solutions are created, which creates enduring impact, and builds community and group agency.

## Nintirri Service Areas



# Six Pillars



## Build Systems Scaffolding

### INTENDED OUTCOMES:

- Digitised systems enable seamless coordination across all Nintirri services.
- Real-time data improves program evaluation and supports evidence-based decision making.
- Impact is captured consistently to demonstrate outcomes to partners and funders.



## Support People and Culture

### INTENDED OUTCOMES:

- Staff feel supported, aligned to purpose, and equipped to deliver complex community care.
- Cultural safety, flexibility, and relational practice define the organisational culture.
- Board and team leadership are strengthened through succession, training, and alignment with values.



## Sustainable Finance and Investment Model

### INTENDED OUTCOMES:

- Priority services are financially sustainable through strategic investment.
- Revenue growth supports service expansion and community resilience.
- Investment planning builds organisational flexibility and innovation capacity.



## Grow Funding and Partnerships

### INTENDED OUTCOMES:

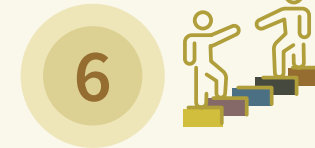
- Partnerships strengthen access and innovation in remote care delivery.
- Funder alignment reflects shared values and long-term commitment to social impact.
- Data and storytelling elevate the visibility of Nintirri's outcomes and value proposition.



## Build Profile and Influence

### INTENDED OUTCOMES:

- Nintirri is known for its leadership in early childhood, health equity, and family safety.
- Community and sector narratives are shaped by Nintirri's insights and innovation.
- Media, branding, and community engagement amplify impact and trust.

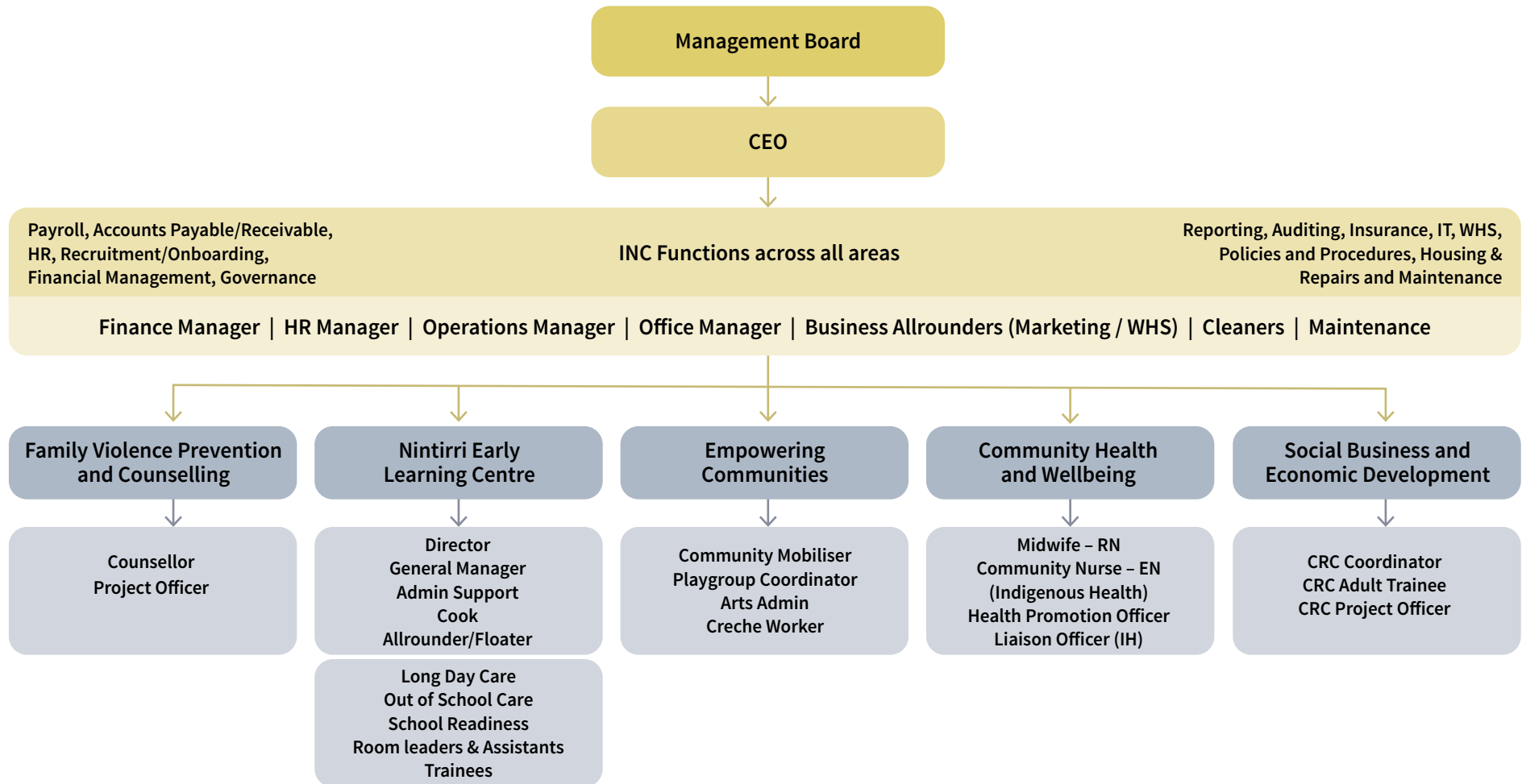


## Leadership and Transparent Governance

### INTENDED OUTCOMES:

- Governance structures ensure accountability for service quality and cultural integrity.
- The Board models values-based leadership and inclusive strategic oversight.
- Transparency and integrity strengthen partner trust and organisational credibility.

# Nintirri Organisational Chart APRIL 2025



# Strategic Measures by 2030

**20% Increase**  
in funding base

**5+ New**  
structured partnerships

**Digital systems**  
fully operational

**Strong staff and board**  
retention and succession

Demonstrable community  
**impact outcomes**

# Environmental Commitment

Nintirri recognises the inseparable link between environmental health and community wellbeing.

As a leading organisation in the Pilbara, we commit to embedding environmental responsibility across all areas of our work—from early childhood and adult learning to community resourcing and family safety to health care, arts, and play.

Environmental ill-health is a significant determinant of Aboriginal and community health, and our leadership in this space will be both a point of difference and an essential element of future funding and program design.

Every service area will be informed by this commitment to environmental sustainability and improvement.

## Acknowledgement of Country

In the spirit of reconciliation, The Nintirri Centre warmly acknowledges the Traditional Custodians of the lands on which we live, work, and walk—the Muntulgura Guruma people, as well as the Banjima and Yinghawangka peoples.

We honour their deep and enduring connection to land, sea, and community, and we pay our respects to Elders past, present, and emerging and extend that respect to all Aboriginal and Torres Strait Islander peoples.

